

# Integrating Health Care Planning for Health and Prosperity in North Queensland

The Integrating Health Care Planning for Health and Prosperity in North Queensland Project aims to improve the responsiveness of health services to the health needs of communities in the North Queensland region. The North Queensland region is defined in the Project as the region bounded by the five Hospital and Health Services from the Mackay region through to the Torres Strait and the Northern Territory border.

Investing in the health workforce and related improvement in models of care can be a strong economic driver for prosperity; a healthy community is a necessary pre-requisite for economic development. This Project provides a unique opportunity to unite health industry partners and engage with local communities to improve efficiencies and effectiveness in service planning and delivery.

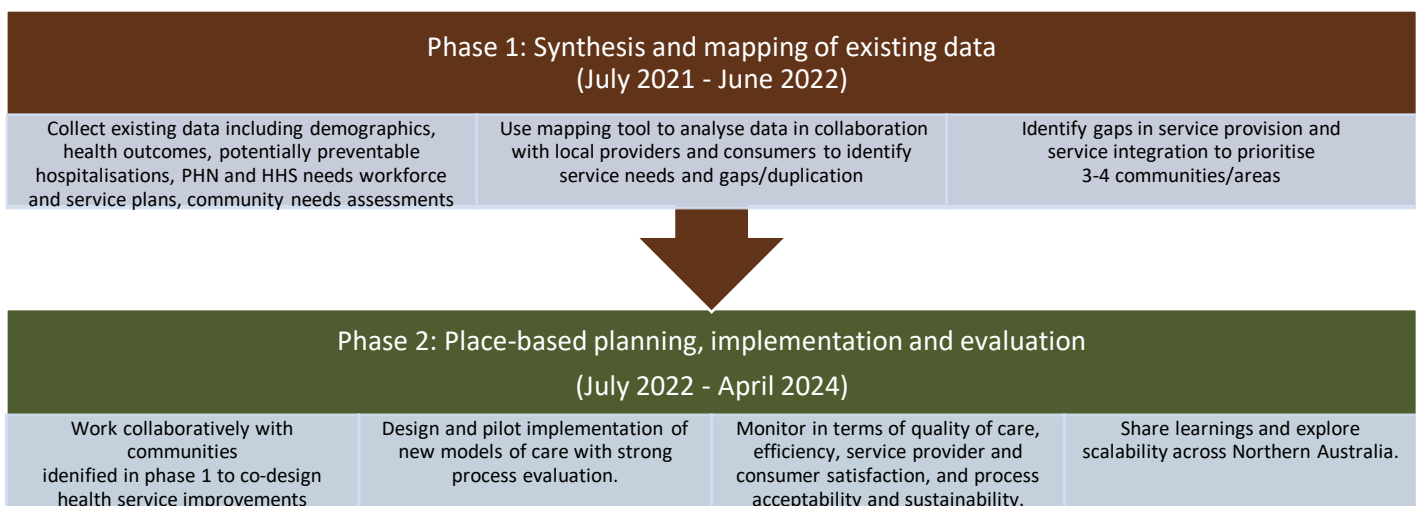
The James Cook University research team are coordinating the project. Project governance is provided by a Technical Reference Group comprising representatives from all Project partners. Funding for the Project has been received from the Cooperative Research Centre for Developing Northern Australia (CRCNA), with a financial contribution from Tropical Australian Academic Health Centre (TAAHC), and in-kind contributions from Project partners.

## Project Partners

- Tropical Australian Academic Health Centre Partners
  - Cairns and Hinterland Hospital and Health Service
  - Mackay Hospital and Health Service
  - North Queensland Primary Health Network
  - North West Hospital and Health Service
  - Torres and Cape Hospital and Health Service
  - Townsville Hospital and Health Service
  - James Cook University / Australian Institute of Tropical Health and Medicine
- Western Queensland Primary Health Network
- Queensland Aboriginal and Islander Health Council
- Queensland Health Office of Rural and Remote Health
- National Rural Health Commissioner
- Northern Territory Department of Health
- The Rural Clinical School of Western Australia
- Cooperative Research Centre for Developing Northern Australia



The project has two distinct phases. In phase 1, existing data will be collected and analysed using innovative mapping techniques to define community and service needs and identify gaps and duplication. In phase 2, place-based planning with three or four prioritised communities will co-design, implement and evaluate new models of care. Impacts and outcomes of the project will be evaluated in terms of quality of care, efficiency, service provider and consumer satisfaction, and process acceptability and sustainability.



For more information contact the Project Manager: [northausthealth@jcu.edu.au](mailto:northausthealth@jcu.edu.au)



The author/s acknowledge the financial support of the Cooperative Research Centre for Developing Northern Australia which is part of the Australian Government's Cooperative Research Centre Program (CRCP). The CRCNA also acknowledges the additional supported provided by the Western Australian, Northern Territory and Queensland Governments. We also acknowledge the financial and in-kind support of the project participants.